



FOR IMMEDIATE RELEASE

August 17, 2020

Contact: Tiffany Heyer
OES_InfoOfficer@sjgov.org

Contact: Marissa Matta
mamatta@sjgov.org

San Joaquin County Hospital Intensive Care Units Operating Above 100% Capacity for 45 Straight Days Amid COVID-19

French Camp, Calif. – Hospital Intensive Care Units (ICU) in the County are operating at **123% capacity** while total hospital capacity is **at 70%**. San Joaquin County hospitals report **2 patient deaths** due to COVID in the past 24 hours.

“Hospital COVID patient admissions in San Joaquin County are beginning to rise following a downward trend that started in late July. This increase in hospital admission is a stark reminder that we must remain steadfast in following public health recommendations to wear a mask, wash hands, social distance and avoid gatherings,” Dan Burch, EMS Administrator.

What People Should Do If They Have A Medical Emergency Or Are Sick:

Do not delay seeking care. If you are experiencing a medical emergency such as a heart attack, stroke, difficulty breathing or altered mental status contact 911 to activate the EMS system. If you are ill or sick contact your physician or healthcare provider.

How People Can Protect Themselves:

We are all in this together. Every person has a role to play. Your actions save lives.

DO: Stay home; Avoid people outside your household; Wash hands with soap and water for at least 20 seconds; Wear a face mask when out in public; Cover your cough or sneeze; Frequently clean and disinfect touched objects and surfaces; Maintain physical distance of six feet whenever outside of the house; Stay away from work, school or other people if you become sick with respiratory symptoms like fever and cough.

###

Notes to editors:

- San Joaquin County OES in partnership with San Joaquin County EMS Agency will provide updates daily on the most current hospital statistics Monday-Friday.
- Graphs and tables will be provided showing hospital bed capacity, ICU capacity and historical tracking.
- This document is intended to prevent and control the transmission of COVID-19 by informing the public and serves a public health purpose.

Hospital Bed Capacity in San Joaquin County

Number of Hospital Beds in Use	Percentage of Occupied Licensed Hospital Beds	Number of Hospitalized COVID + Patients	Percentage of Hospital beds Occupied by COVID+ Patients
684	70%	160	23%

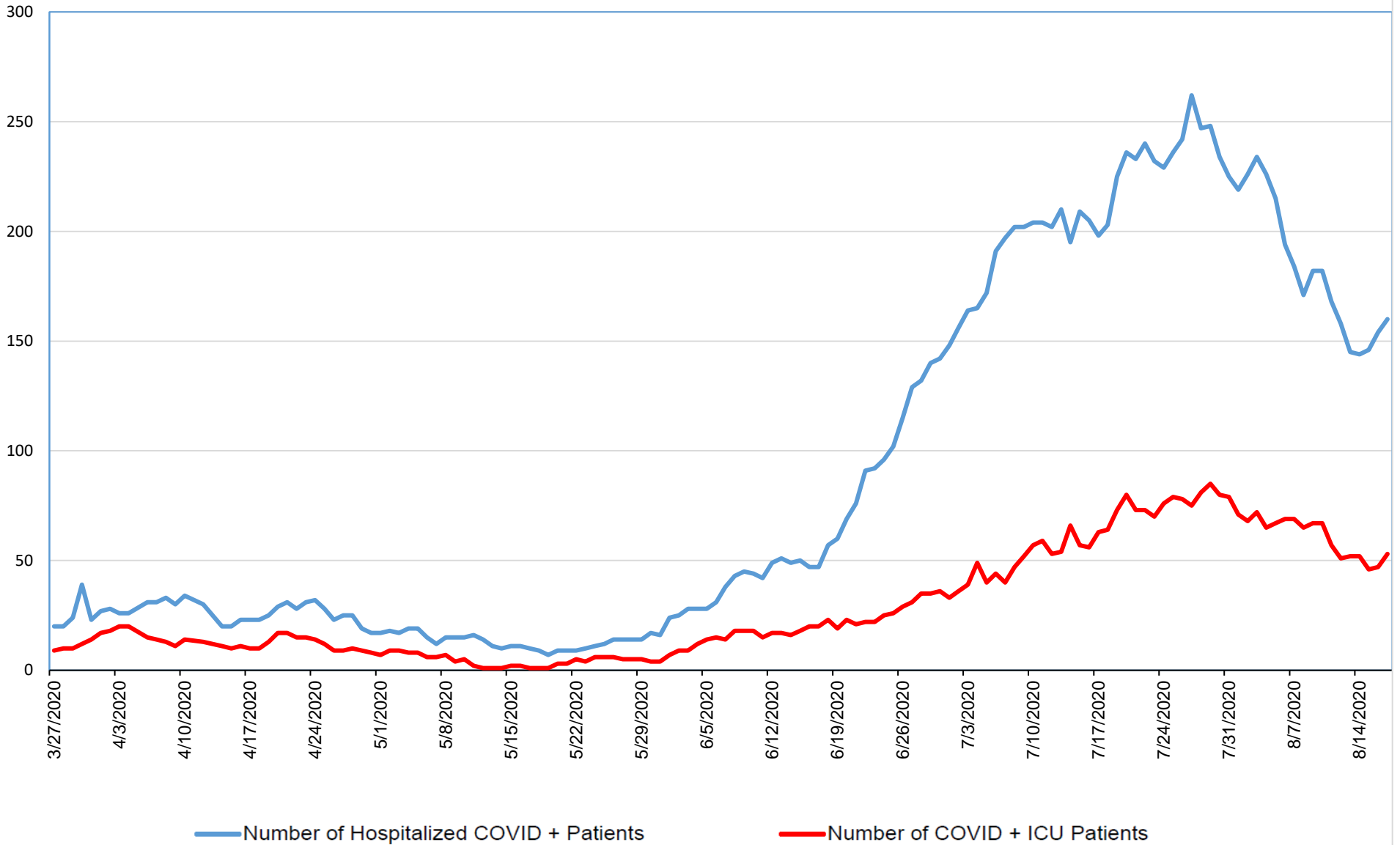
Hospital Intensive Care Capacity in San Joaquin County

Number of ICU Beds in Use	Percentage of Occupied Licensed ICU Beds	Number of COVID + ICU Patients	Percentage of ICU beds Occupied by COVID+ Patients
122	123%	53	43%

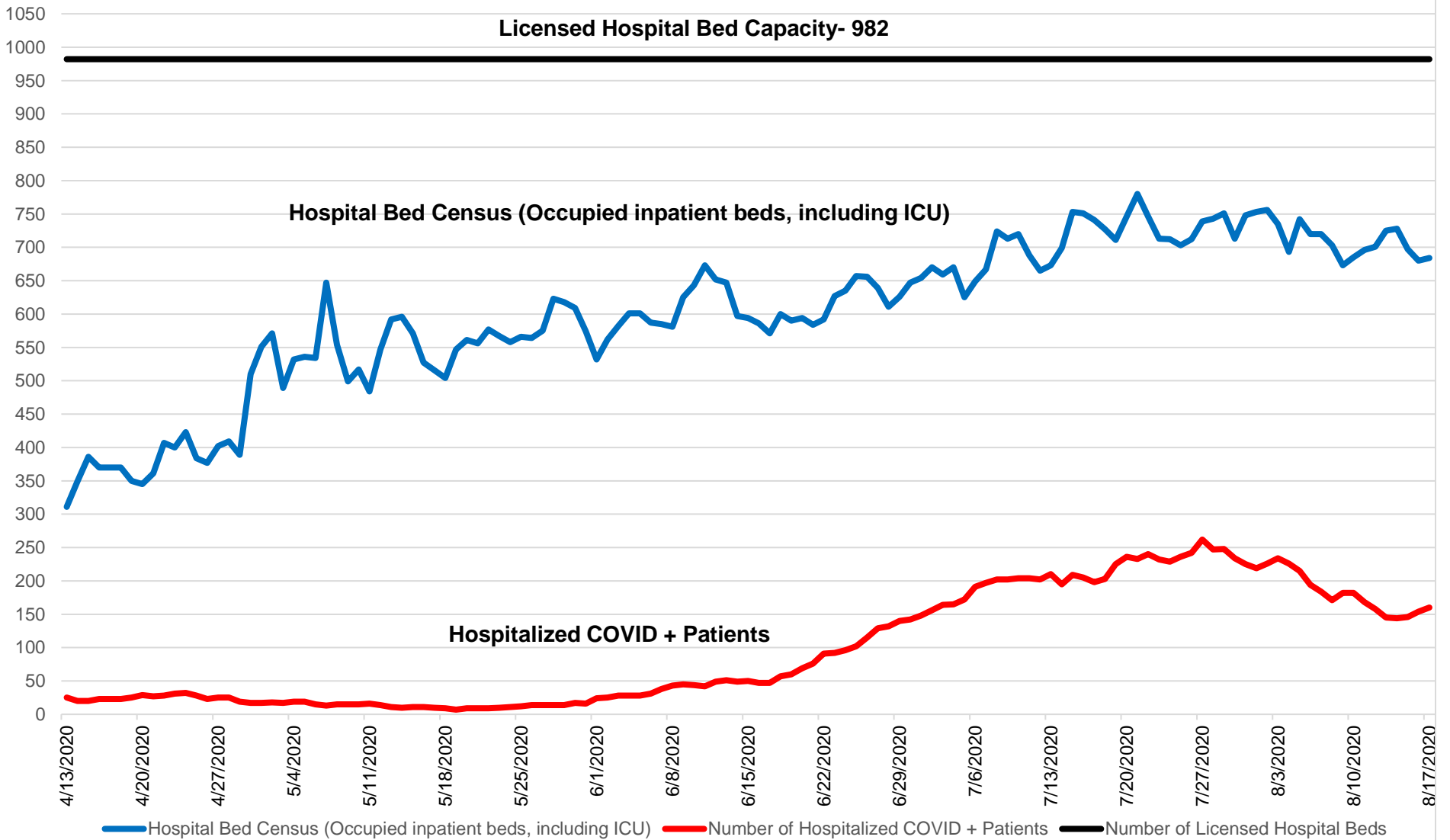
Status of San Joaquin County Hospitals

8/17/2020	Adventist Health Lodi Memorial Hospital	Dameron Hospital Association	Doctors Hospital of Manteca	Kaiser Foundation Hospital Manteca	San Joaquin General Hospital	St. Joseph's Medical Center	Sutter Tracy Community Hospital
Number of Hospital Beds in Use	93	47	39	24	155	292	34
Number of COVID (+) Patients Hospitalized	28	11	6	10	20	73	12
Number of ICU Beds in Use	11	10	7	8	23	55	8
% ICU Capacity	110%	83%	88%	133%	144%	141%	100%
Number of Hospitalized (COVID +) Patients in ICU	7	4	4	6	3	24	5

San Joaquin County EMS Agency COVID-19 Hospitalization Tracking Report



San Joaquin County EMS Agency Hospital Census Tracking Report



San Joaquin County EMS Agency COVID-19 Hospitalization 30 Day Tracking Report

